



Citroën Berlingo M

Peugeot Rifter

Opel Combo Life

Owners manual

Table of contents

General

- Introduction 3
- Safe use 4

Safety systems

- Wheelchair tie-down 5
- Occupant securement 6

Operation

- Ramp 7

Electric system

- Fuses 9

Options

- Emergency lever rear exit 10
- Original rear seat 11
- Coach seats 13
- Tripod seats 14
- Trilflex seats 15
- Rear collision protection named Bodyguard (optional) 16

Technical

- Identification sticker 17
- Rear bumper
- Exhaust system
- Tailgate
- Fuel tank
- Maintenance WAV conversion 18
- Maintenance checklist WAV conversion 19

Warranty

- Disclaimer of warranty 20

Introduction

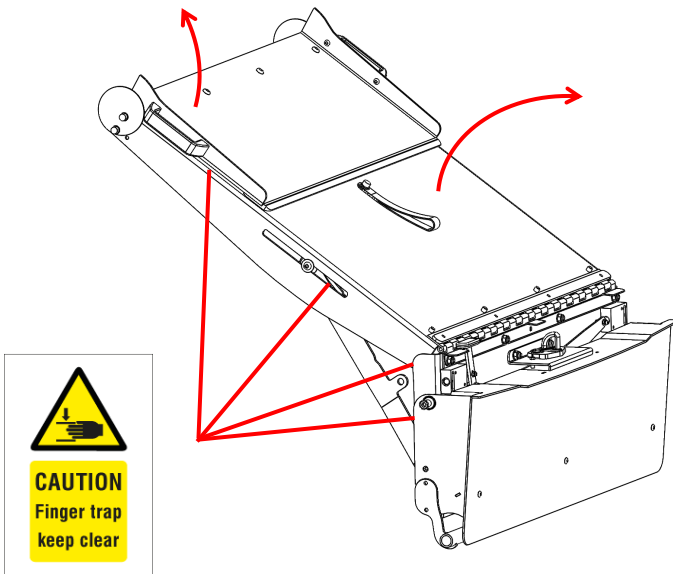
Your vehicle has been modified to transport occupants in a wheelchair. This places the vehicle in the "Wheelchair Accessible Vehicle" (WAV) category. All modifications equal the vehicles manufacturer quality resulting in an unaffected lifespan of the vehicle and safety of its passengers.

This instruction manual explains the use and operation of all parts modified and installed new in the vehicle. Reading it is a necessity for safe use and proper maintenance.

Tripod Mobility wishes! you much pleasure with your new adapted vehicle!

Safe use

Caution with all moving parts. Serious damage could be caused by inadequate operation. Illustrated are a few examples of parts where caution is required. Extra Caution is required with possible opted actuated features like automatic hatch and ramp openers and a winch.



Wheelchair tie-down

The tie-down system consists of 2 electric locking reels in the front and 2 manually operated retractors in the back. Detailed instruction on how to set up and apply the safety equipment can be found in the supplied instruction manual of the securement system manufacturer.



*consult the wheelchair manufacturer or documentation on what attachment points of the wheelchair are suitable for tie-down in a vehicle

In order to make a free path, rear retractors may have to be removed of the floor mounts by pulling them backwards.



The red switch found on the right side panel unlocks the front reels (LED visible). Fasteners (often hooks) can both be retracted and connected to the wheelchair positioned at the bottom of the ramp. Lock the front reels by flipping the switch on the side panel (LED off). The spring loaded belts will automatically retract and lock when the wheelchair is pushed in position.

(Re) install both rear retractors on the floor, now they can be mounted and connected to the wheelchair. Knobs on the side of the retractors are used to tighten the belts.

Rear retractors can be released with a lever positioned on the back of the retractor and removed from the floor by pulling them backwards. Front reels can be released by flipping the switch on the right side panel (LED visible). Push the wheelchair slightly forward to release the front retractors of their locks and roll out the wheelchair and it's occupant.

Always mount the rear retractors onto the floor mounts when not in use. Unsecured objects can cause trauma to passengers during vehicle collision.

Occupant securement

Securing both the wheelchair and the occupant is mandatory. Detailed instruction on how to set up and apply the safety equipment can be found in the supplied instruction manual of the securement system manufacturer.

More enhanced protection during a rear and lateral collision can be obtained by installing the bodyguard.

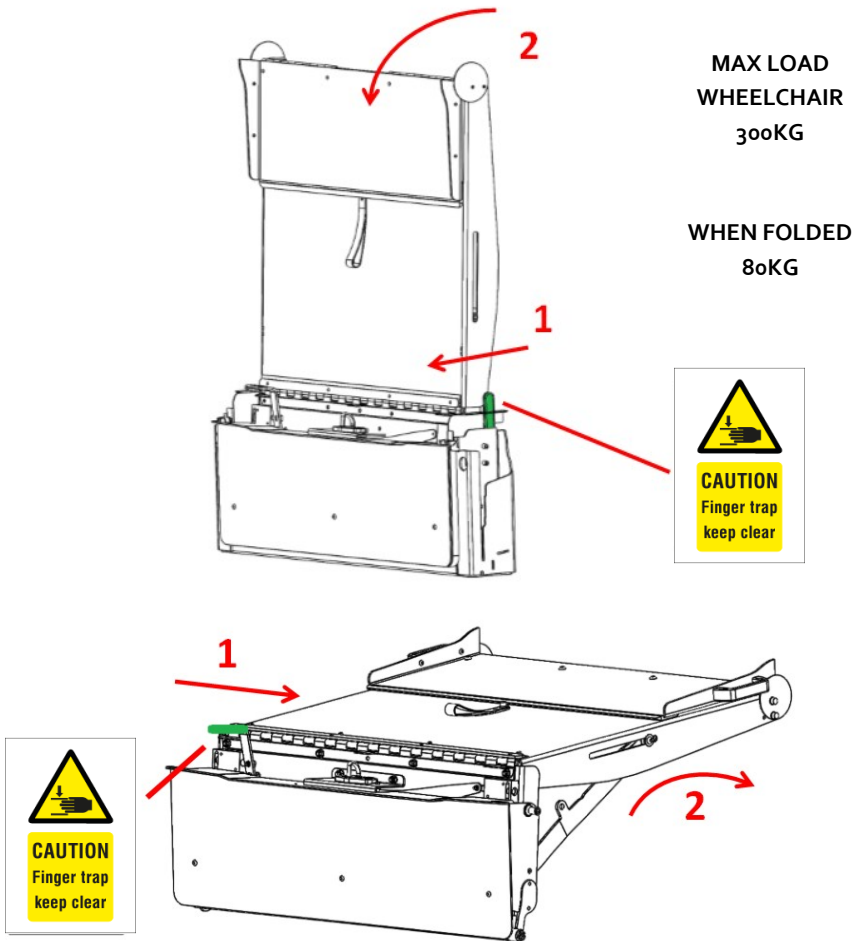


Ramp

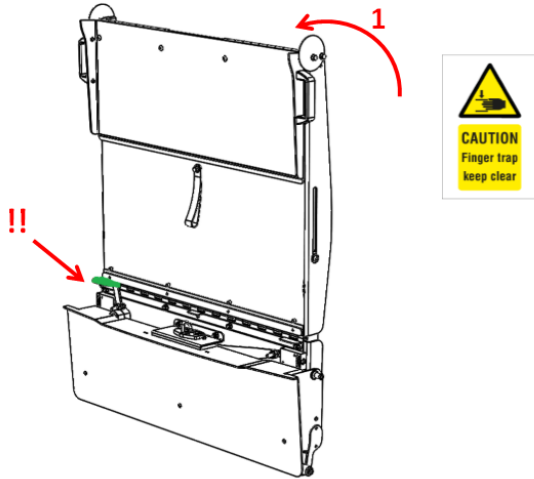
Most types of ramps open by operating the lever on the right side of the ramp. Pull this lever towards you to open the ramp.

All flat folding ramps have an additional lever on the left side to fold the ramp in flat position.

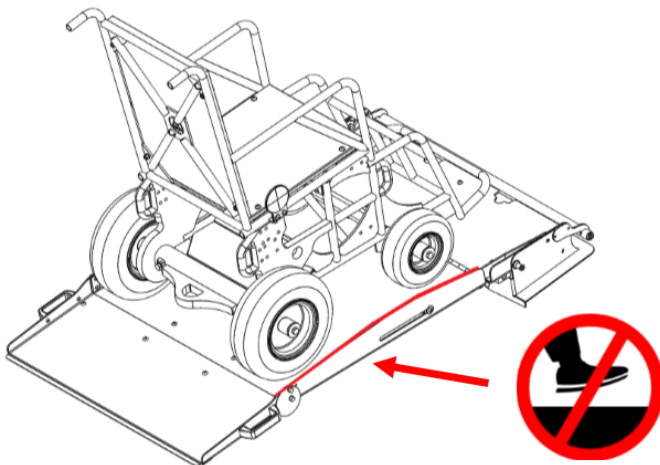
The foldable ramp can be folded inwards to cover the lowered floor. This creates a flat floor comparable to the cargo floor before conversion. The maximum load capacity for this area is 80 kg.



To use the ramp for a wheelchair again, the ramp must be folded up. The ramp will lock itself when folding up. However check carefully whether the ramp is locked to prevent the mechanism from malfunctioning in the future. The ramp is only successfully locked when the locking lever is horizontal and a click is heard.



To prevent damaging the ramp it is not allowed to stand on the edges of the ramp when it is being used..



Fuses

Opening the hood, on the right side the fuse box can be found. After wheelchair conversion a red 10A fuse is added.



Emergency lever rear exit (optional)

An emergency lever is optionally positioned on top of the rear hatch panel and should only be used in case of emergency! Pulling the emergency lever will unlock the mechanically operated rear hatch latch.

*Open the white cover and pull the red handle to operate the lever. The rear hatch can now be pushed open.



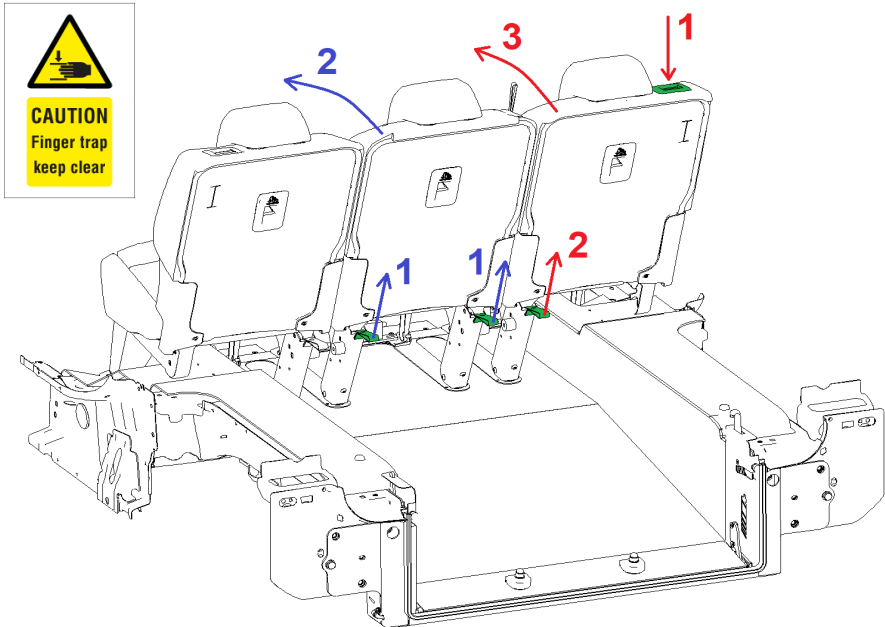
Original Citroen / Peugeot / Opel seats

As a result of the lowered wheelchair floor pan, a new construction has been made to lock the seats in place.

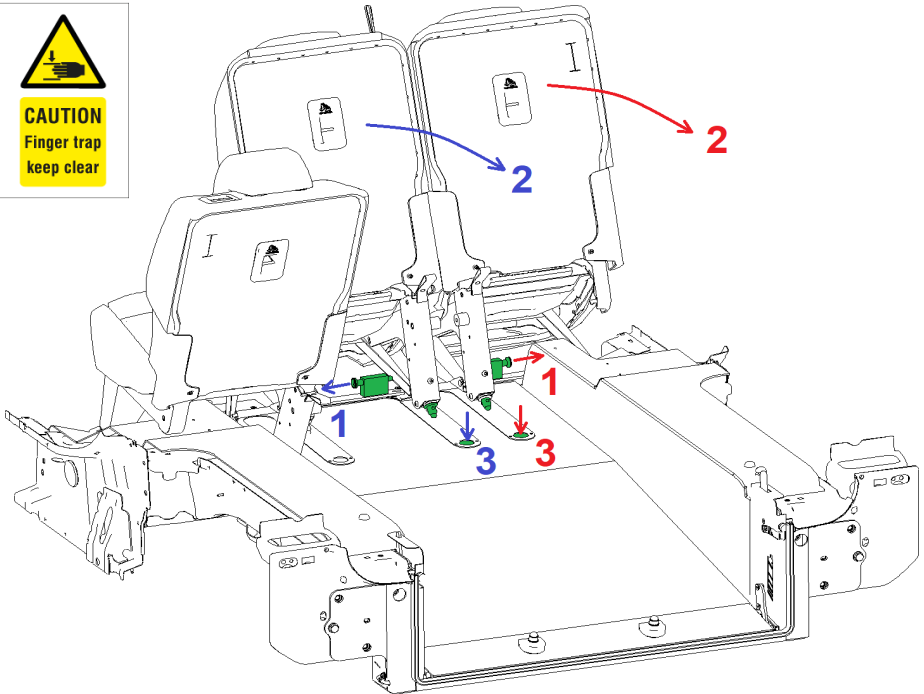
All original latches to fold the seats up and down maintain their functionality as before conversion. Consult Citroen / Peugeot / Opel documentation for further instruction.



Creating space for a wheelchair with it's occupant is done by folding away the two seats (if desired, the third seat can also be folded). Follow the steps in the same order as it is shown in the picture below. Be sure that the folded seats are locked. This operation remains the same in case of a 2/3 bench and separate seat setup.



When seats are folded away, extended latches have to be opened manually before folding the seats to seating position. To realize the seating position, follow the steps shown in the picture below. First you have to unlock the seats (1). Then you have to pull the seats backwards (2) till the latches will lock the seats automatically (3).



Coach seats (optional)

Coach seats are restricted to a maximum of one left seat and one right seat. Creating more space for a wheelchair and it's occupant right in-between the seats to enhance the seating position.

Optional removable seats can be removed with the knob found behind the seat. Rotate the knob counter clockwise until tension is released, tilt the black knob and rotate 90°. The fixation pin inside the knob now stays retracted and the seat can be removed. Pull the seat backwards and carry out the seat through the rear hatch to minimize risk of damage to the vehicle.

Install the seat by placing the 4 disks mounted under the seat in the slotted holes of the bracket mounted in the vehicle. Grab the seat like pictured and make sure the knob is up. Pull the seat forward and rotate the black knob 90° until it drops down. Rotate the knob clockwise until you feel resistance. The seat is now under slight tension to reduce unwanted noise while driving.



Tripod seats (optional)

Tripod seats are restricted to a maximum of one left seat and one right seat. Creating more space for a wheelchair and it's occupant right in-between the seats to enhance the seating position.

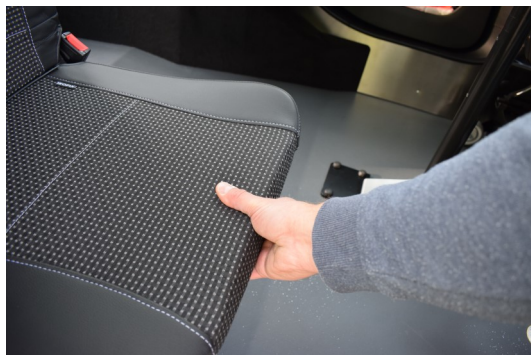
Optional removable seats can be removed by pulling the grip on the back of the seat bracket. Pull the grip until a red line is visible, lift the back of seat so the locking pin is fully out of the bracket. The seat can now be removed. Carry out the seat through the rear hatch to minimize risk of damage to the vehicle.

Install the seat by placing the front beam under the bend on the seat bracket. Position the locking pin on the hole in the seat bracket. Push the seat down until the seat is locked.



TriflexAir seats (optional)

Triflex seats can be put aside to make space for the wheelchair occupant. Pull the seat cushion up. When the seat is vertical, pull the red handle and turn a little. This will unlock the seat. Turn the seat fully to the side, once in correct position the seat will automatically lock itself. Lower the headrest in order to not block the view of the passengers.



To put the seats back in seating position do the same in reverse. Pull the red handle and turn a little. Once the seat is in correct position it will lock itself again. Push the seat cushion down. When necessary pull up the headrest in correct position.



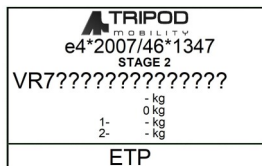
Rear collision protection named Bodyguard (optional)

During a rear collision, protection can be provided by the optional bodyguard. A fully adjustable backrest mounted on a swivel base provides protection to back and neck. Opening and closing of the bodyguard can be done by lifting handle 1. The backrest is now free to rotate inside or outside the vehicle. Detailed instruction on how to set up and apply the safety equipment can be found in the supplied instruction manual of the securement system manufacturer



Identification sticker

An identification sticker can be found in the opening (B-pillar) of the right side front door. Data concerning the conversion and replacement parts can be obtained by the dealer with the numbers on this sticker.



Bumper

Replacement bumpers can be ordered directly by the manufacturer of the vehicle. Modifications to the bumper are done by the supplier of the conversion. Replacement bumper covers can also be obtained and installed by this supplier

Tailgate

Replacement parts for the modified tailgate can be obtained and installed by the supplier of the conversion.

*Note, in some vehicles the original gas struts have been replaced by stronger gas struts. Replacement gas struts are too obtained by the conversion supplier.

Exhaust system

Part of the exhaust system has been modified. The supplier of the converted vehicle has knowledge what parts are obtained by the manufacturer of the vehicle and what parts are modified. Exhaust parts close to the engine are not modified and can be obtained by the manufacturer of the vehicle directly.

Fuel tank

In order to obtain an ideal sitting position for the wheelchair passenger, a stainless steel fuel tank has been placed. The capacity of the new tank is slightly less than for conversion. Due to the different shape of the tank, the fuel gauge may also deviate. In the lower range, the fuel gauge indicates the correct value.

For maintenance always contact your conversion dealer
(See identification label in right B-pillar)

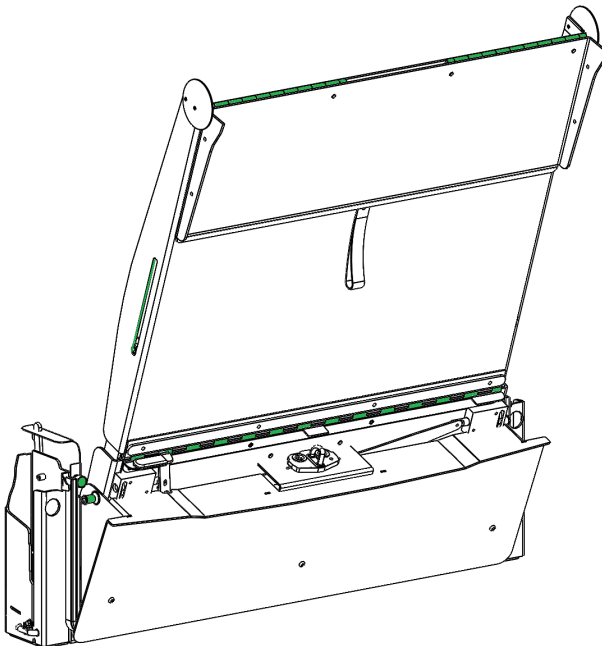
Maintenance WAV conversion

All maintenance concerning the conversion is in addition to, and in compliance with, the required maintenance recommended by the vehicles manufacturer. Only mild solvents are allowed to be used cleaning the interior of the vehicle. Strongly forbidden are acidic cleaners, excessive amounts of water (hose), abrasives and any kind of scourer.

Strongly recommended is a maintenance check with an interval of 1 year. This check should be executed by your dealer that has knowledge about the conversion.

Marked green in the illustrations on this page are some examples of parts that are important to be kept clean and lubricated. Your dealer knows what lubricants are best to use.

Vacuum cleaning the lowered floor pan and ramp on a very regular basis prevents dirt getting into moving parts. Attachment of dirt to grease and lubricants in moving parts results in higher wear and tear.



Maintenance checklist WAV conversion

- ◇ Clean and lubricate (with a Teflon (PTFE) spray) all moving parts
- ◇ Inspect rear retractors on proper operation and if necessary clean them
- ◇ Inspect electric front reels on proper operation and if necessary clean them
If the retractors are placed in the lowered floor, clean this space by the
Removing the cover plates.
- ◇ Check if electric front reels automatically lock (if unlocked) when closing the
rear hatch
- ◇ Inspect all webbing on damage
- ◇ Check all seats on proper operation of folding up and down including inspec-
tion of all latches and strikers
- ◇ Inspect ramp and hatch seals on cracks and openings
- ◇ Check exhaust system on corrosion and damage that results in leaks
- ◇ Check all brake lines for damage, traces of leakage and fixation to body
- ◇ Check all fuel lines for damage, traces of leakage and fixation to body
- ◇ Check the fuel tank for damage and traces of leakage
- ◇ Inspect underseal body coating for proper corrosion protection
- ◇ Inspect all coated ramp, tailgate extension, rear cross member and other
parts on proper corrosion protection
- ◇ Try triggering all rear parking sensor (optional)

Disclaimer of warranty

Your vehicle has been thoroughly checked before delivery. The warranty covers normal use by the wheelchair user and other passengers as described in this manual. The vehicles manufacturer warranty on the base-vehicle remains applicable (See the specific manufacturers conditions of warranty).

Tripod Mobility grants a 24-month conversion warranty on parts and/or structural defects, after delivery. Parts will be replaced or repaired by Tripod Mobility, or in agreement with Tripod Mobility, by your dealer.

In case of repairs executed without Tripod Mobility's express consent, our warranty is voided. In case of negligence, overdue maintenance and/or modifications to the conversion, the warranty is voided.

Maintenance history WAV conversion

Stamp	Date	Notes



Collseweg 10 • 5674 TR Nuenen • **T** 040 283 64 42 • **F** 040 283 62 45
E info@tripodmobility.com • www.tripodmobility.com